

A Division of  The Spindle Company



VISIT US ONLINE:

**www.ADAHotelSigns.com**

A Division of  The Spindle Company

A leading supplier since 1916, we offer the most complete selection of hotel signage products in the world. Our hotel products are not only located in every state, we have shipped and serviced hotels on every continent and in nearly every country in the world. We will help you and your hotel or client to meet brand requirements, ADA guidelines, local fire building codes.

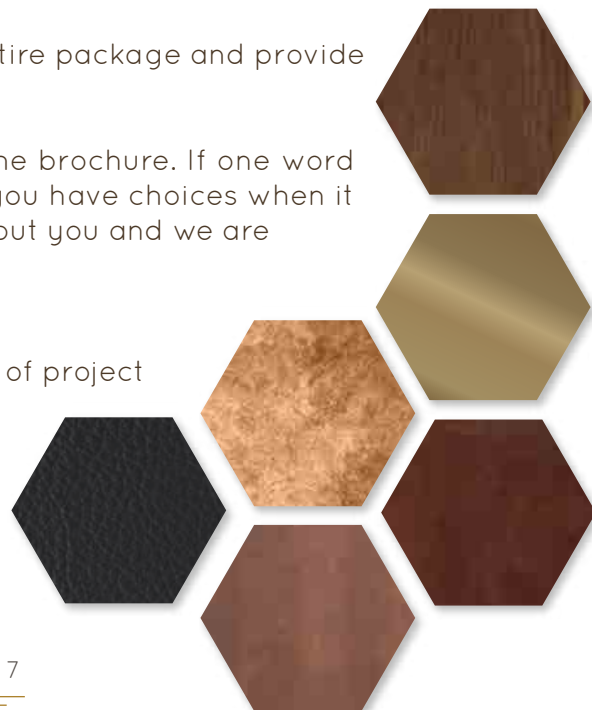
Naturally, the best way we can design the perfect sign package is by providing us with your interior design vision board. We understand that is not always available, therefore we put together this guide to help you and our team to come up with a design to match your vision.

Please enjoy looking through some sample designs provided. The next step would be to fill in the last 2 pages and return them to us. We will design your package in a few simple steps:

- 1)- Send us required info for us to come up with a design. We begin by designing a room number for your hotel. Once a room number design is approved, we will create a prototype to send to you.
- 2)- Upon receipt of that approval we will provide you with 5 key items for your package that will depict the rest of the pieces.
  - Directionals
  - Restrooms Sign
  - ADA compliant Room Identification Signs (depicting Raised copy and braille)
  - Non ADA compliant (digital print copy) Front of House signs
  - Back of House Signs
- 3)- Once package is approved, we will design the entire package and provide a final quote.

Please visit us online to view additional samples not in the brochure. If one word was to sum up our motto it would be service. We realize you have choices when it comes to your signage purchase. Simply put, we care about you and we are committed to earning your business! Let us prove it!

\* All designs are for inspiration purposes only. At the time of project we will assure all ADA codes and guidelines are properly met.



# *Vintage* INSPIRED



Art Deco meets Mid-Century



Vintage  
Typewriter Key



Dog Tag/  
Squished Penny  
Metal Room  
Numbers Either  
hollow cutout  
numbers or  
printed

Art Nouveau  
Our team custom  
designed this piece  
using the pattern  
unique to this  
boutique hotel brand.  
We can create your  
own brand pattern



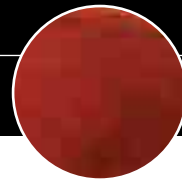
## SOFT PALETTE | PATTERNS | FEMININE

Powder coated frame in any color  
(showing matte gold or silver tones)  
Can be any shape or color,  
pattern, material





# INDUSTRIAL



*Mixing*

metals | woods | leathers

WELDED  
POWDER  
COATED  
FRAMES



IN ANY COLOR, SHAPE OR SIZE

**ADAHotelSigns**.com

A Division of The Spindle Company

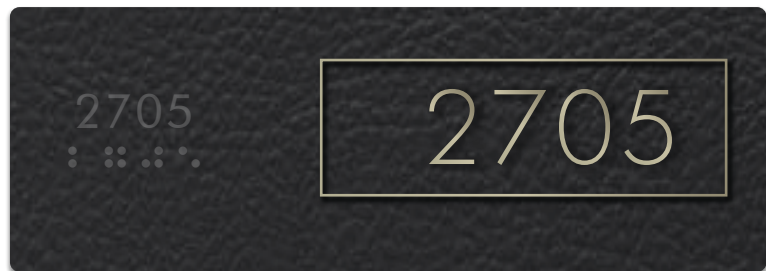
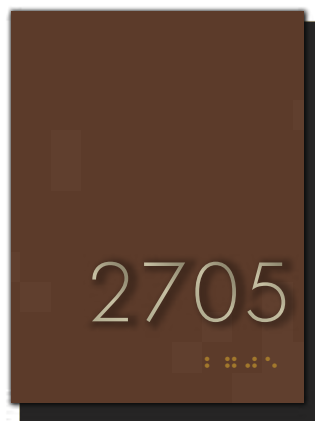
# URBAN *Elegance*

CLEAN | TIMELESS | MINIMALIST

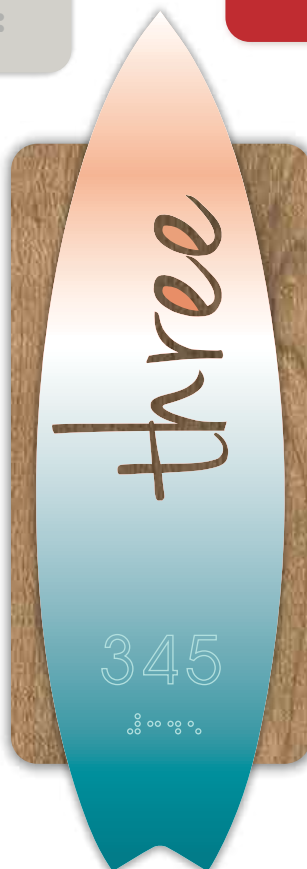
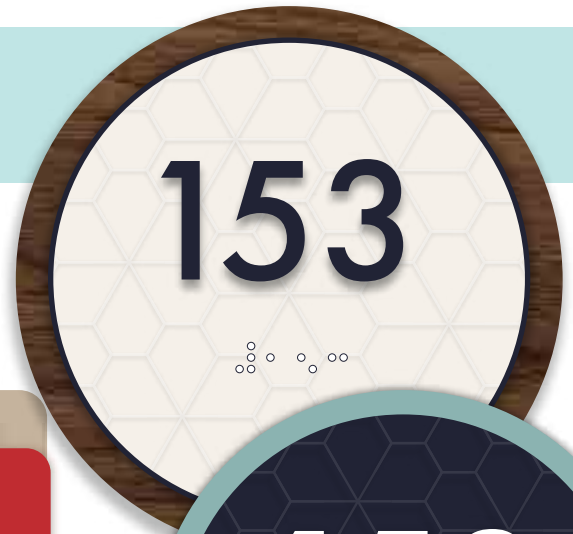


Frosted Acrylic  
on Wood  
held with  
Standoffs

TOBACCO LEATHER  
MATTE BLACK  
BRASS COPY



# Fun & Quirky



Bold  
Use of  
Color  
Fonts  
Patterns

# ORGANIC MODERN

CLEAN | FRESH | AIRY

## *Blending Materials*

wood | cement | metal

Blending raw materials.

Simplicity to assure a clean appearance.

mimic whiskey barrel galvanized metal back digital print "no."



- slate look and feel back piece
- matte acrylic printed cotton top piece.
- Raised font in Copper
- leather strap to attach both pieces and to wall





# SouthwestBoho

Blending metals, leathers, fabrics



Naturally, the best way to provide you the ultimate custom package for your hotel signage, is to provide us with your Design Board. If that is not available, please help us by answering a few questions about your vision.

What is the design style of the hotel: \_\_\_\_\_

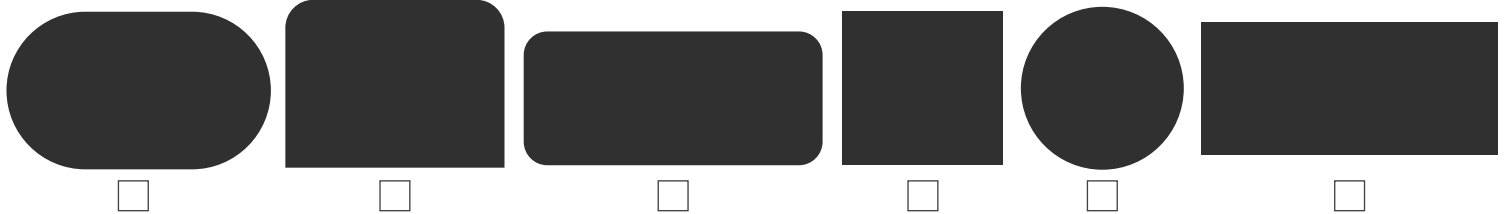
What are key words you would use to describe the mood of your hotel: \_\_\_\_\_

Are there any styles in this guide that inspire you? \_\_\_\_\_

Paint color/Wall coverings of Corridors, Guest rooms, Lobby, etc \_\_\_\_\_

What is the desired size? \_\_\_\_\_

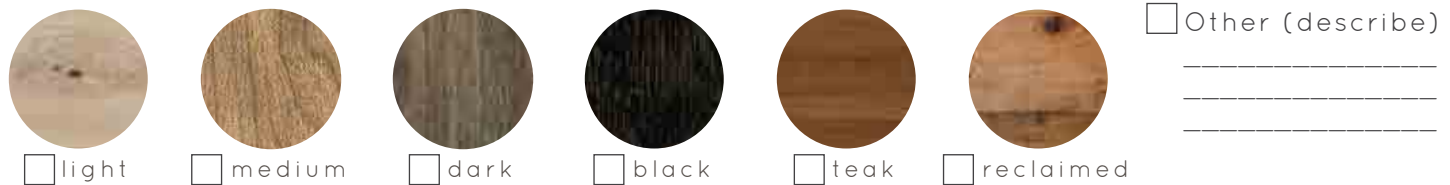
Please indicate desired shape (mark all you would like to see):



Please select all materials you would like to see used:

☐ Acrylic - Please specify colors: \_\_\_\_\_

Woods: Please specify if product #'s (Formica, WilsonArt, etc) are known: \_\_\_\_\_



Leather: Please specify if exact types or product #'s are known: \_\_\_\_\_



Stones: Please specify if exact types or product #'s are known: \_\_\_\_\_



Textiles: Please specify if exact types or product #'s are known: \_\_\_\_\_

Select Color family:



☐ white/  
ivory



☐ tans



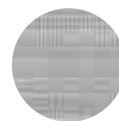
☐ grays



☐ darks



☐ orange



☐ blues

☐ Other (describe)

\_\_\_\_\_  
\_\_\_\_\_  
\_\_\_\_\_

Metals: Please specify if product #'s are known (chemetal, ets): \_\_\_\_\_

1)- Select Color family:



☐ bronze



☐ copper



☐ gold

☐ brass

☐ champagne

☐ rose



☐ chrome

☐ stainless

☐ aluminum

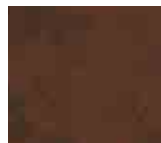
☐ galvanized



☐ black



☐ matte  
black



☐ rust

☐ Other (describe)

\_\_\_\_\_  
\_\_\_\_\_  
\_\_\_\_\_

2)- Select Sheen / Tint

☐ matte

☐ dark

☐ polished

☐ light

☐ satin

☐ brushed

☐ weathered / aged

Please use this section to describe as best a possible your vision:

\_\_\_\_\_  
\_\_\_\_\_  
\_\_\_\_\_  
\_\_\_\_\_  
\_\_\_\_\_  
\_\_\_\_\_  
\_\_\_\_\_  
\_\_\_\_\_  
\_\_\_\_\_  
\_\_\_\_\_  
\_\_\_\_\_

